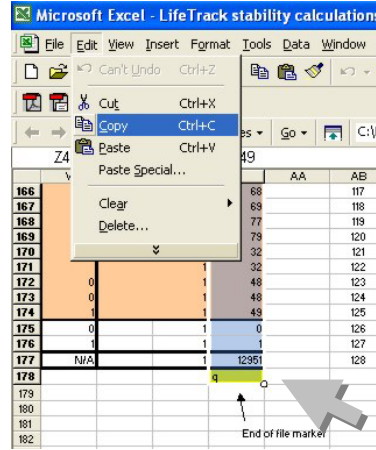
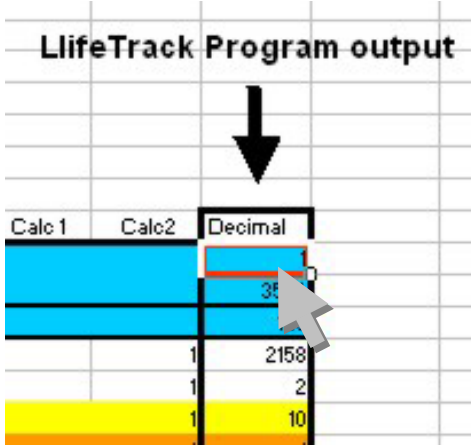


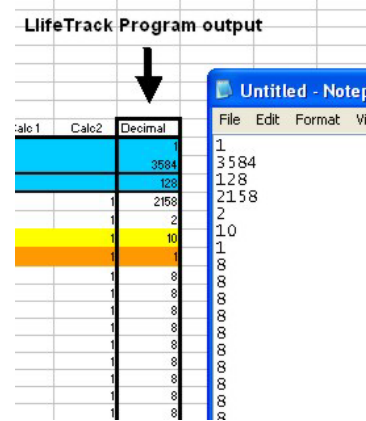
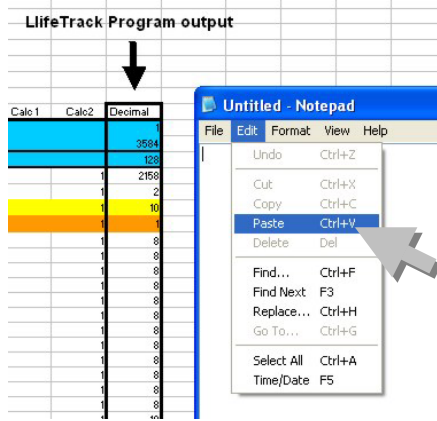
1: Use the LifeTrack Excel spreadsheets and instructions to optimize your parameters. When this is finished, highlight the LifeTrack program output column, starting from the first numeric entry.

2: Continue highlighting to the final "q" character at the end of the column (include this "q" character in your copy field). Then copy the highlighted area.



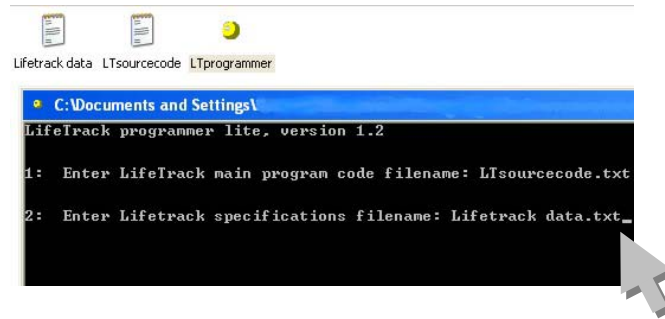
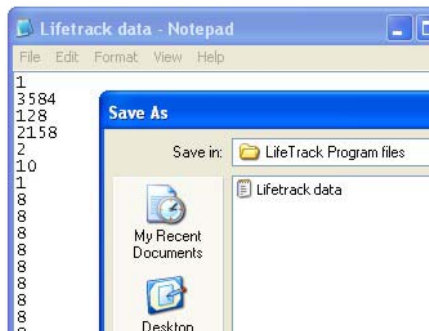
3: Open up MS notepad, and paste the copied numeric data

4: The results of the paste operation are shown. Note that the numbers in the notepad are the same as the column.



5: Save the notebook file in the same folder with the other LifeTrack program files. Give it a name such as "Lifetrack data". Notepad will put in the ".txt" automatically.

6: The LifeTrack program file folder should contain the Lifetrack data, the LifeTrack source code, and the LifeTrack programmer program. Start the LTprogrammer program and enter the name of the source code file and data file. Here the ".txt" part of the filename is not automatic. You need to enter ".txt" yourself as part of the file name.



Note: Programming is for expert users. Beginning users should consider pre-programmed CliniSense LifeTrack units. CliniSense is not responsible for problems due to improper programming.

7: If the LifeTrack units do not require temperature recalibration, answer "n" for question 3. Enter the name that you wish to give the output file for question 4. You should end this output filename with a ".txt"

8: If the LifeTrack data file is valid, and the programmer operation is successful, you will get a "program file saved prompt." The LifeTrack programmer is now finished.

<p>LifeTrack programmer lite, version 1.2</p> <p>1: Enter LifeTrack main program code filename: LTsourcecode.txt</p> <p>2: Enter Lifetrack specifications filename: Lifetrack data.txt</p> <p>3: Recalibrate thermistor temperature conversion equations ? Y/N: n</p> <p>4: Enter Output filename: newcode.txt</p>	<p>LifeTrack programmer lite, version 1.2</p> <p>1: Enter LifeTrack main program code filename: LTsourcecode.txt</p> <p>2: Enter Lifetrack specifications filename: Lifetrack data.txt</p> <p>3: Recalibrate thermistor temperature conversion equations ? Y/N: n</p> <p>4: Enter Output filename: newcode.txt New LifeTrack program file saved.</p> <p>Press any key to exit.</p>
--	--

9: (advanced users only): If you wish to recalibrate the temperature calibration of the LifeTrack units, answer "y" to question 3.

10 (advanced users only): The two temperature calibration points are 0 °C and 40 °C. Both can be changed up to +/- 0.5 °C. If, for example, the LifeTrack reads 0 °C as -1 °C, the 0 °C response can be increased up 0.5 °C by entering 0.5(The temperature correction parameters are provided in the LifeTrack unit's packaging).

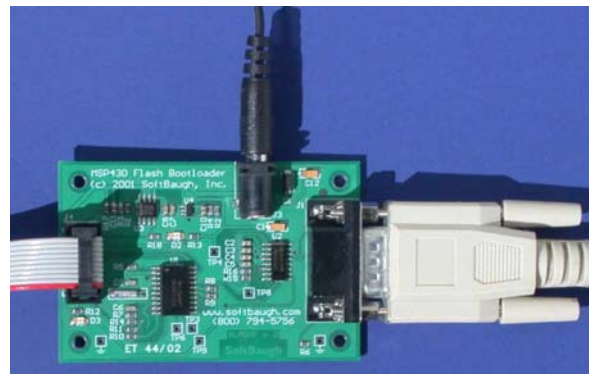
<p>LifeTrack programmer lite, version 1.2</p> <p>1: Enter LifeTrack main program code filename: LTsourcecode.txt</p> <p>2: Enter Lifetrack specifications filename: Lifetrack data.txt</p> <p>3: Recalibrate thermistor temperature conversion equations ? Y/N: y</p> <p>Enter 0C (old -> new) correction (+/- 0.1 to 0.5) degrees:</p>	<p>LifeTrack programmer lite, version 1.2</p> <p>1: Enter LifeTrack main program code filename: LTsourcecode.txt</p> <p>2: Enter Lifetrack specifications filename: Lifetrack data.txt</p> <p>3: Recalibrate thermistor temperature conversion equations ? Y/N: y</p> <p>Enter 0C (old -> new) correction (+/- 0.1 to 0.5) degrees: 0.5</p>
--	--

11 (advanced users only): Enter in any desired 40 °C correction, and confirm the change.

12: The new LifeTrack program is now ready to load. To load the program, hook up the SoftBaugh programmer to a Windows 95, 98, ME, or XP computer via the RS232 cable, and also attach the programmer power supply and data cable.

Then enter the name by which you wish to save the final LifeTrack code file (use .txt again) and exit the program.

<p>LifeTrack programmer lite, version 1.2</p> <p>1: Enter LifeTrack main program code filename: LTsourcecode.txt</p> <p>2: Enter Lifetrack specifications filename: Lifetrack data.txt</p> <p>3: Recalibrate thermistor temperature conversion equations ? Y/N: y</p> <p>Enter 0C (old -> new) correction (+/- 0.1 to 3) degrees: 0.5 Enter 40C (Old -> new) correction (+/- 0.1 to 3) degrees: 0 Confirm: 0C adjusted by 0.5, 40C adjusted by 0 Y/N: y</p>



13: Remove the transparent rubber door from the base of the LifeTrack unit.



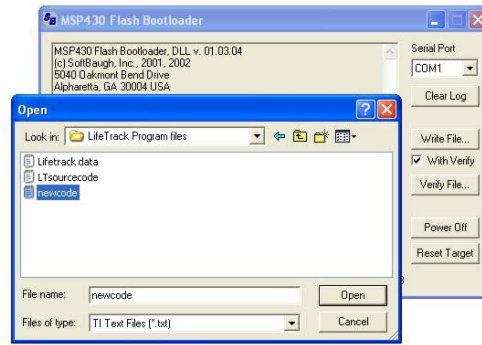
14: Plug data cable into the unit (follow orientation instructions on attached tag).



15: Turn on the SoftBaugh flash bootloader program. It should recognize that the SoftBaugh adapter is hooked up to the computer.



16: Select the "Write File" box, and load the modified LifeTrack code file from step 8.



16: The programmer will give an "odd block" warning. This is normal, and is OK. If the programming operation is successful, the "Write [with verify] completed successfully" message will be displayed.

17: Congratulations! You have now programmed the LifeTrack unit. Remove the programming cable, replace the transparent plastic door, and (optionally) reset the unit. Before using, appropriate QC testing is recommended.

